

SAHCO

2023 COLLECTION

DRAPERY AND UPHOLSTERY

SAHCO 2023

GRAZE YOUR FINGERS AGAINST MY SKIN

Fluid and transgressive, familiar yet deceptive, traversing the past, present and future. The Sahco 2023 collection speaks to almost 200 years of heritage, craft and knowledge expressed in the language of now.

Drapery and upholstery textiles that play with paradox and contrasts to find beauty and balance. Exquisite and raw, super-feminine and wild, restless and relaxed, classical and radically new. Individually distinct but transcendent together.

Patterns showing the mark of the artist's hand. Cinematic with a narrative arc and scale. Flowers, always flowers.

Palettes chromatic and off kilter but composed. Grounded by black and tones of white, nuanced not neutral. Pink for sensitivity. Red, lime and lilac in the limelight.

Textures for human gestures, animated and sensual, tracing forms.

Drapery as couture. Translucent and opulent to dress a room. True flower power, sexy and ultra-feminine. Shimmering lotus leaves and herons in kimono colours. Natural linen with the luxe of lurex stripes.

Drapery as flight of fantasy. Diaphanous and enveloping. Sensuous pleats and folds for a shadowy play of light. Edgy yet fragile organza cut as a matrix. Swirling water expressed in texture.

Drapery as storyteller. Broderie anglaise, crisply Parisian in technique and radically new in appearance. Botanic still-life hand-drawn and upscaled with a palazzo vibe. Scribbled happy faces and flowers in tactile organic cotton.

Upholstery as life. Artisanal, reassuring and lively. Chenille lived-in and comfortable, soft and heavy. Bouclé textured yet dissolved, shiny yet matt.

Upholstery as romance. From the archive reimagined for the future, Suzy Wong meets Christian Dior, a fusion of culture and creativity.

"We do tell a story with this collection. We look for perfection, through balance. We add a bit of pop. Starting with black and tones of white, we use a lot of colours, each one considered in context. We engage the eye, the hand, the heart, the mind. When you combine these textiles that's where you get the impact. It's a bit like how you dress, you tell a story of who you are, how you feel, what you want."

– Bengt Thornefors, Creative Director Sahco.

COLLECTION OVERVIEW

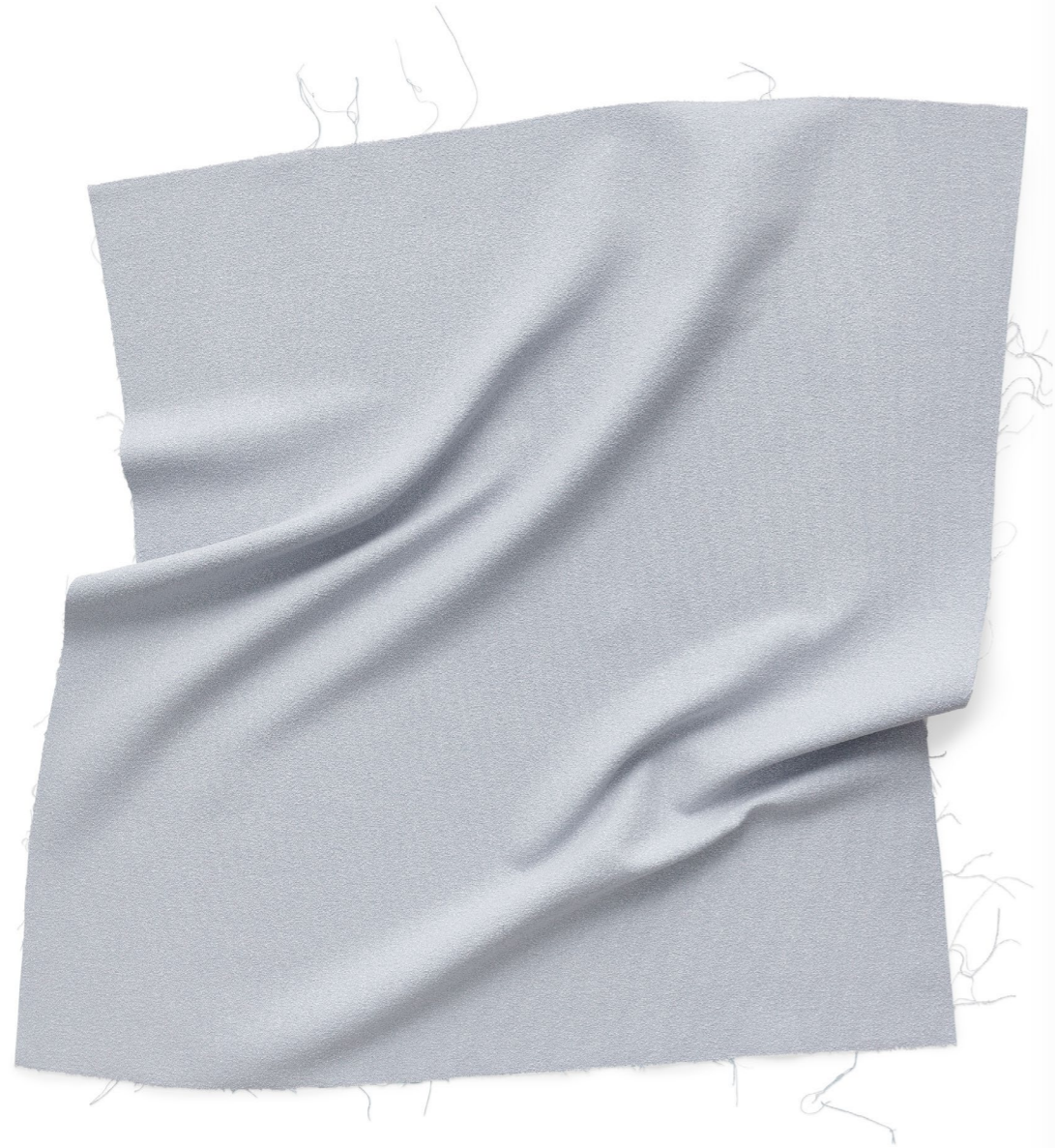














ACCA STRIPE 0331
Upholstery



ACCA STRIPE 0421
Upholstery



ACCA STRIPE 0551
Upholstery



ACCA STRIPE 0731
Upholstery



ACCA STRIPE 0771
Upholstery







ASAMI 0191
Draperies



ASAMI 0441
Draperies





ASAMI 0581
Draperies

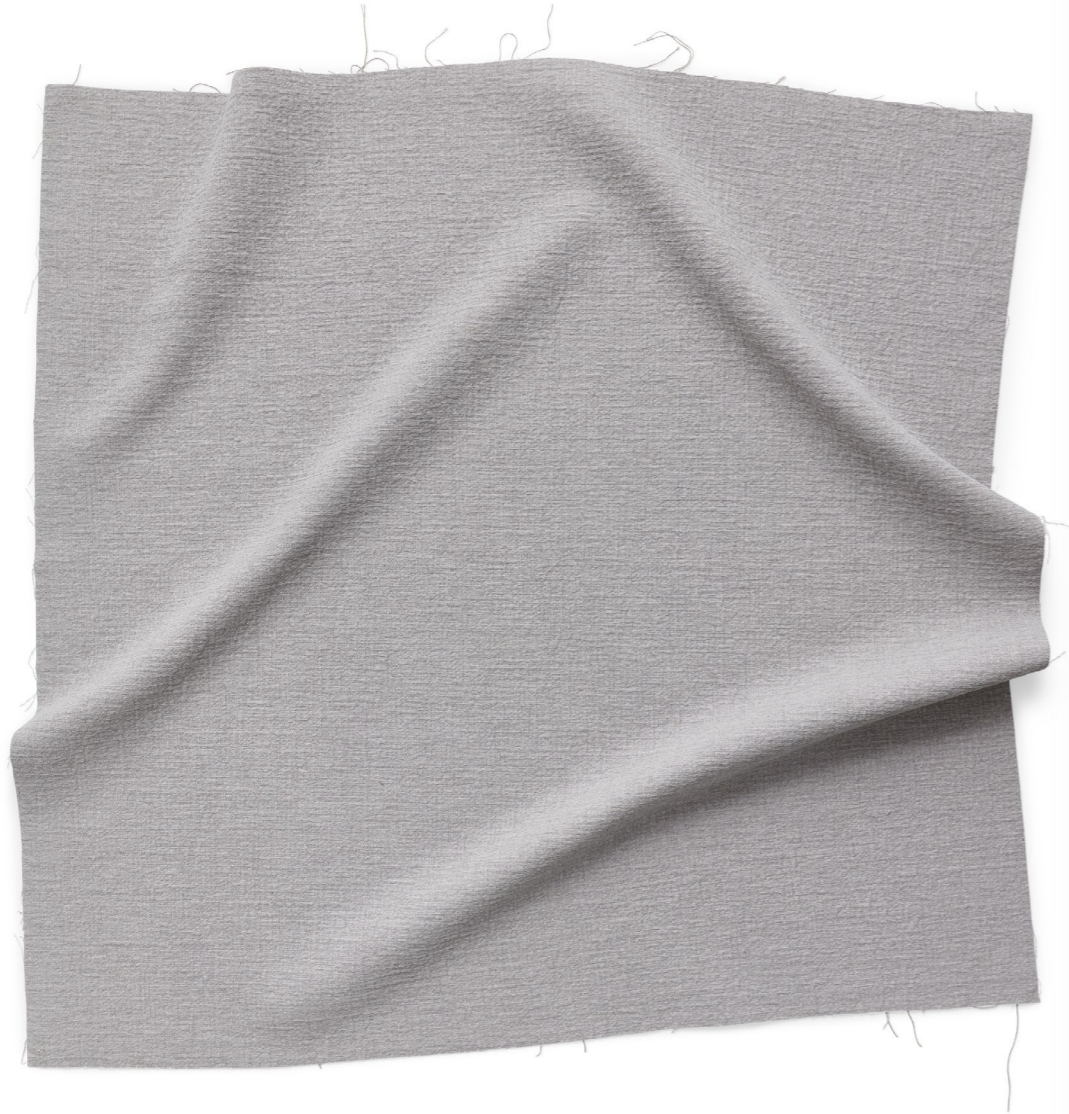


ASAMI 0721
Draperies





CIFRADO 0131
Upholstery



CIFRADO 0221
Upholstery





CIFRADO 0381
Upholstery



CIFRADO 0401
Upholstery



CIFRADO 0451
Upholstery



CIFRADO 0611
Upholstery







CIFRADO 0901
Upholstery







ERIE 0351
Draperly



ERIE 0391
Draperly





ERIE 0561
Draperies



ERIE 0921
Draperies



ERIE 0981
Draperies













HALIMAH 0791
Draperly









KETAKI0581
Draperly



KETAKI0731
Draperly





KILA KILA 0141
Draperies



KILA KILA 0391
Draperies





KILA KILA 0671
Drapery



KILA KILA 0751
Drapery



KILA KILA 0791
Draperly

















OTORI 0411
Draperies



OTORI 0471
Draperies





OTORI 0711
Draperies



OTORI 0771
Draperies







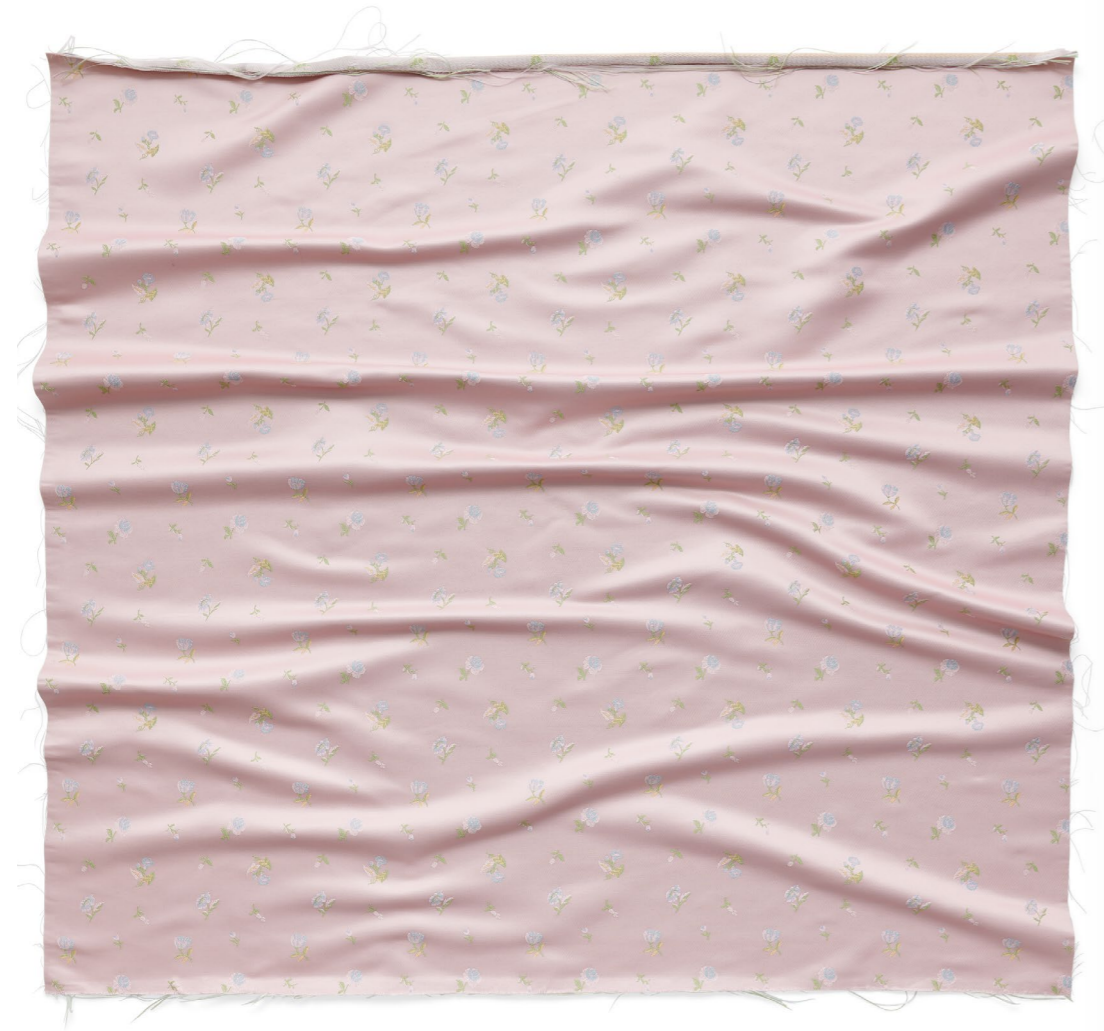


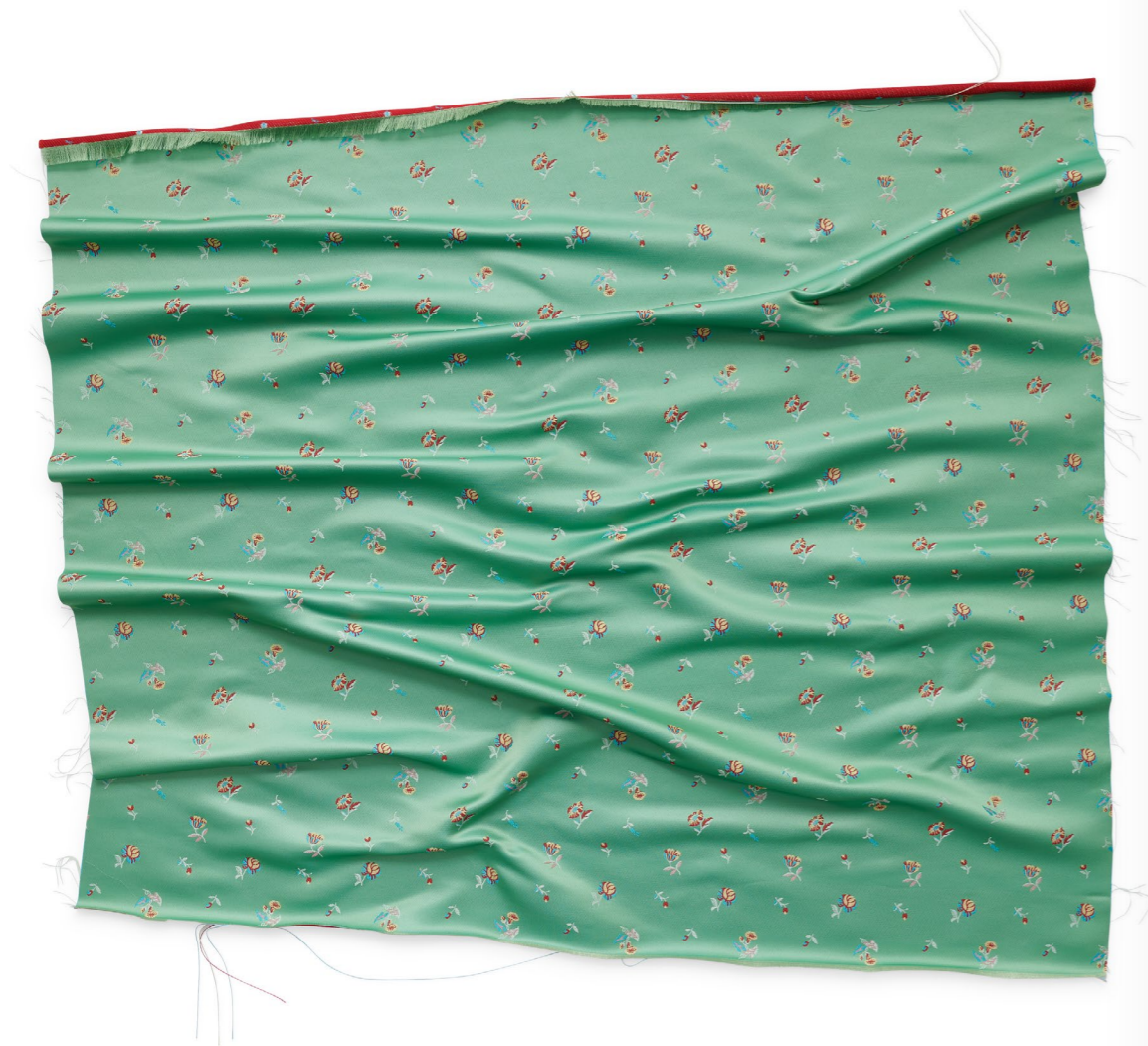
SAJI 0481
Upholstery



SAJI 0591
Upholstery









SHIGERU 0231
Draperies



SHIGERU 0451
Draperies







SHIGERU 0791
Draperly



SHIGERU 0991
Draperly





VIVUS 0221
Draperies



VIVUS 0371
Draperies



VIVUS 0401
Draperies



VIVUS 0621
Draperies





INDEX

ASAMI
[p.26 – p.35]

Drapery
100% polyester
Width 320 cm
10 colours

Honouring Issey Miyake and inspired by Shibori folds, Asami uses a specialised weaving process to create permanent almost three-dimensional pleats. The effect is both geometric and dissolved, a folded and shadowy play of light in a silky, sensuous sheer. Elegant and sartorial in black, intense in burgundy red, sexy in lipstick red and subtle in champagne, pale blue and lemon.

ERIE
[p.52 – p.62]

Drapery
100% recycled polyester
Width 320 cm
11 colours

Textural and expressive, with an organic pattern reminiscent of swirling water, Erie has the delicacy of a fashion textile and yet is made from 100 percent recycled polyester. Beautiful and sustainable, the soft chalky sheer is a testament to state-of-the-art techniques. Colours range from soft grey to rust, clay and forest green. A strong quince yellow brings energy.

HALIMAH
[p.64 – p.74]

Drapery
99% linen, 1% polyester
Width 300 cm
11 colours

Bringing bling to natural linen, Halimah plays with perceptions and tactility, taking a painterly approach to colour. The twisted lurex yarn creates a sparkly irregular stripe in the slubby linen. Acid yellow, dusky rose and lilac are lively and fresh. Classic midnight blue paired with silver lurex is pure understated luxe.

KETAKI
[p.76 – p.83]

Drapery
30% cotton, 56% polyester, 14% recycled polyester
Width 140 cm
9 colours

A broderie anglaise with a Parisian sensibility and a playful sense of irony, Ketaki is classic in technique and totally contemporary in attitude. Curious pattern elements like snakes, keys and conches embroidered in tonally matched shiny thread are laid out with the precision of a specimen cabinet on the crisp poplin base. Defying any notion of tradition, colours are intense or crisp, razor red and deep black, or optic white and arctic blue.

KILA KILA
[p.84 – p.92]

Drapery
63% organic cotton, 37% micromodal
Width 320 cm
9 colours

Look closely at Kila Kila and happy faces and flowers are just discernible in its scribbles, bringing a sense of humour and intrigue to the tactile organic cotton. Adding to its character is a colour palette intentionally limited to a black or white warp to create subtle contrasts or melange effects. Midnight blue and black are textural. Mid-blue, green and grey are almost silvery. Hot pink is straight off the catwalk.

OMESHI
[p.94 – p.104]

Drapery
69% recycled polyester 31% polyester
Width 140 cm
11 colours

A modern matrix that juxtaposes the rigour of a grid with delicate embroidered organza, Omeshi is edgy yet fragile. Its mesh-like surface is accentuated by the sheen of recycled polyester yarn while cuts in the organza create an atmospheric light effect. Colours are vary between sorbet fresh lime, apricot, lilac and dusky rose. A black warp produces deep navy and dense black.

OTORI
[p.106 – p.114]

Drapery
68% viscose, 32% polyester
Width 137 cm
9 colours

Inspired by Japanese miniatures painted on textiles and ancient kimonos, Otori is an exotic jacquard drape, dreamlike and dissonant in its colouration. Lotus flowers and leaves, herons still or in flight, shimmer on the sateen surface, almost cold to the touch like the water of the pattern. Colours are deliberately off-kilter, raspberry pink with orange, silver with buttery off-white and pearl white with icy grey.

SHIGERU
[p.126 – p.135]

Drapery
45% acetate, 29% recycled polyester, 26% cotton
Width 140 cm
10 colours

True flower power, Shigeru is opulent yet sparing with the glamour and super-femininity of French couture, its intricate almost embroidered flowers seemingly scattered by hand on the shiny surface. Created with the mindset of a fashion designer to dress a room, the colour palette is poetic and radical, from soft rose and champagne white to juxtapositions of black and lime green or shot pink and black.

VIVUS
[p.136 – p.143]

Drapery
44% organic cotton, 40% viscose, 16% linen
Width 140 cm
8 colours

Epic in its scale, Vivus imbues the artistic tradition of botanic still life with a palazzo vibe. Leaf forms and insects in the hand-painted artwork are transcribed in a subtly shiny spun viscose, creating a sense of movement on the cotton and linen base. Colouration creates diverse vignettes, midnight blue with off-white and brown with black are cinematic. Pink with off-white is pure berries and cream.

ACCA
[p.6 – p.17]

Upholstery
33% recycled cotton, 25% recycled polyester, 7% recycled polyacrylic, 35% viscose
Width 140 cm
12 colours

Dense and textured yet lively from the shiny viscose bouclé yarn, Acca Plain is a sibling to Acca Stripe with the same dissolved character in its nubby surface and an extended colour palette. The exclusive bouclé yarn is twisted and tightly looped, its shinier finish a contrast to matt recycled cotton in the weft. Solid colours include the canvas, grey and tobacco of Acca Stripe, complemented by acid green, chocolate brown and black.

ACCA STRIPE
[p.18 – p.24]

Upholstery
33% recycled cotton, 25% recycled polyester, 7% recycled polyacrylic, 35% viscose
Width 140 cm
7 colours

Dense and textured yet lively from the shiny viscose bouclé yarn, Acca Stripe, has subtly irregular tonal stripes dissolved in its nubby surface. The exclusive bouclé yarn is twisted and tightly looped, its shinier finish a contrast to matt recycled cotton in the weft. Coloured in muted contrasts of white and calico, rusty brown, tomato red and turquoise blue.

CIFRADO
[p.36 – p.50]

Upholstery
42% recycled polyester, 24% recycled cotton, 27% viscose, 7% linen
Width 140 cm
15 colours

A heavyweight chenille, Cifrado has the soft reassurance of something well-worn and the characteristics of a heavy-duty upholstery textile. Tumble-finished to achieve this lived-in effect, it is technically innovative: combining chenille and twisted cotton with a double warp of twisted linen and viscose and a high percentage of recycled yarns. From muted greys, ivory and lemon vanilla to Bangkok magenta, dusky rose, tobacco mélange, petrol blue and inky black.

SAJI
[p.116 – p.125]

Upholstery
78% recycled polyester, 22% polyamide
Width 140 cm
10 colours

Suzy Wong meets Christian Dior in Saji, a couture-inspired upholstery fabric that embodies the romance of the past and the creative clash of the future. Made from dense recycled polyester Saji re-imagines a petite archival jacquard, scaled up and coloured for emotional impact. Fresh lilac and pink are cottage-crisp, Eau de nil with turquoise and burgundy is old school made new. Black, golden tobacco and dark burgundy are neo-Baroque.

ABOUT BENGT THORNEFORS

Swedish born, Bengt Thornefors was a senior designer at Acne Studios in Stockholm for nine years from 2003-2011. In 2012 he became Senior Designer & Artistic Consultant for YSL Saint Laurent, during the tenure of Hedi Slimane as Creative Director.

Thornefors founded Magniberg with Nina Norgren, a florist and graphic designer in 2016. Magniberg takes it directions outside of the boundaries of sexes; a meeting between expressions of the modern world; playing on contrasts; breaking rules and classical norms.

ABOUT SAHCO

For almost 200 years, Sahco has defined exquisite taste and superior quality in the world of interiors. Combining classic design and innovation, the elegant upholstery textiles and draperies of the Sahco collection have captured the hearts of a discerning international audience. Their rich textures and refined details can be found in many beautiful homes worldwide. It has been owned by Kvadrat since 2018. Under Creative Director Bengt Thornefors, it will be at the forefront of the industry, setting new standards and defining an interior landscape of rich textures and striking design for today and the future.

